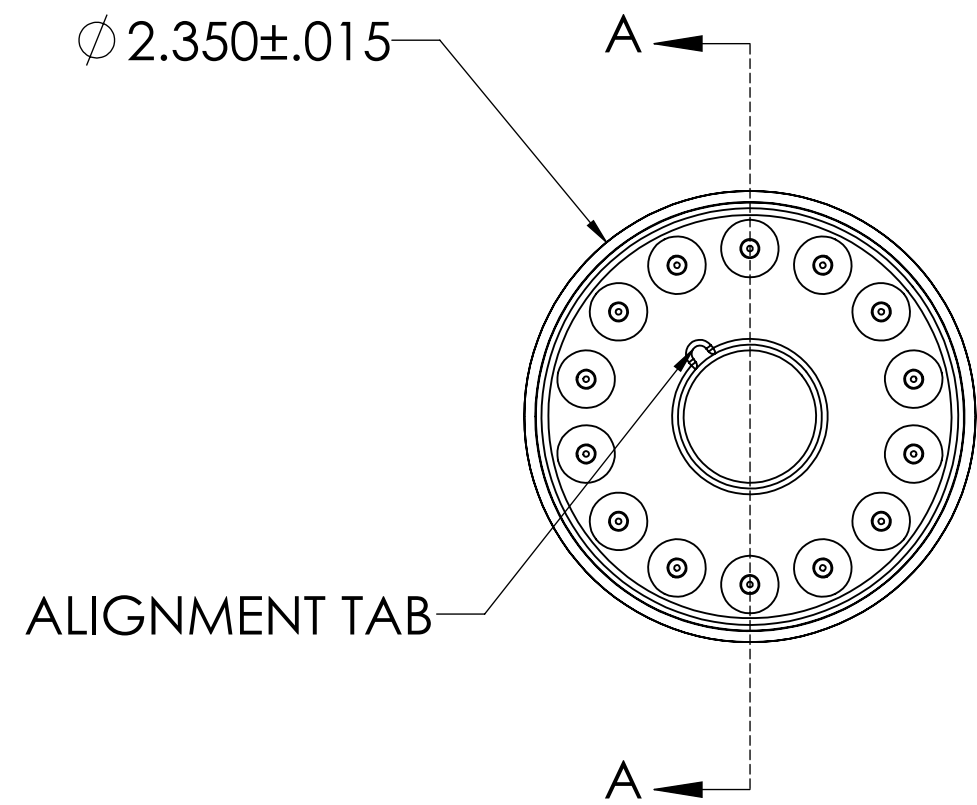
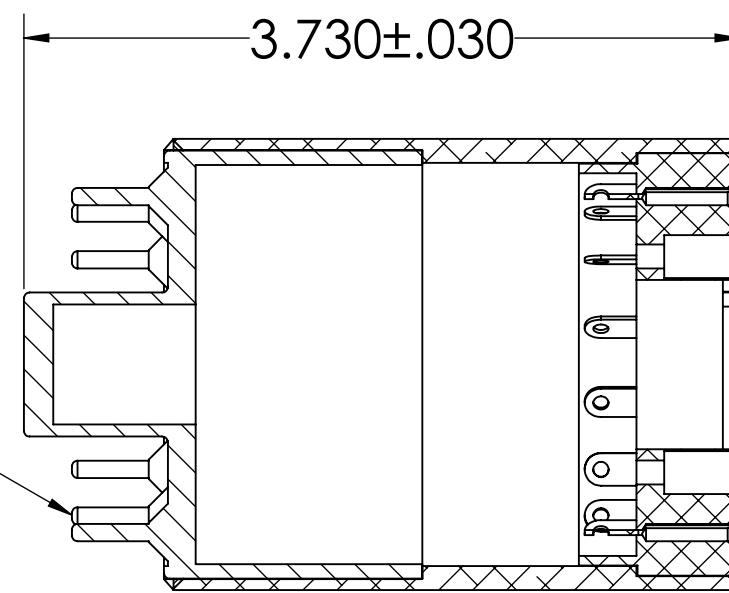


NOTES: UNLESS OTHERWISE SPECIFIED.

1. ALIGNMENT TAB ON BASE TO BE CLOCKED WITH ALIGNMENT GROOVE ON SOCKET
2. ADAPTER FOR HAMAMATSU R6233-100 TO AMETEK DIGIBASE



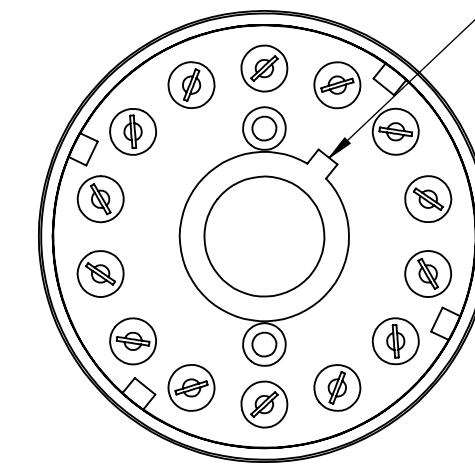
14-PIN BASE



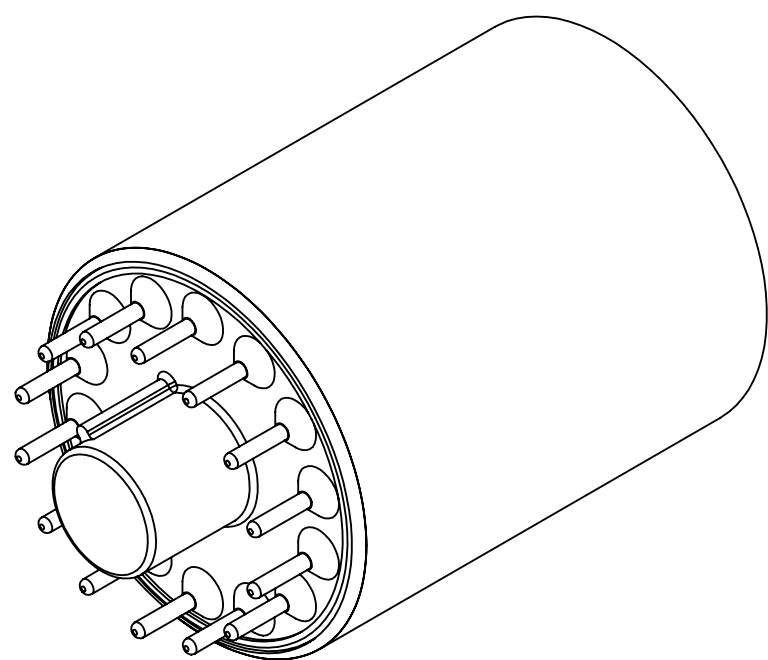
SECTION A-A

14-PIN SOCKET


ALIGNMENT GROOVE



| PMT PIN OUT<br>HAMAMATSU R6233-100 | DIGIBASE<br>PIN DESIGNATION | ADAPTER PMT PIN TO<br>DIGIBASE SOCKET NUMBER |
|------------------------------------|-----------------------------|--|
| 1 - DY1                            | 1 - G                       | 1 TO 3                                       |
| 2 - IC (INTERNAL<br>CONNECTION)    | 2 - IC                      | 2 N/C  |
| 3 - DY2                            | 3 - DY1                     | 3 TO 4                                       |
| 4 - DY3                            | 4 - DY2                     | 4 TO 5                                       |
| 5 - DY4                            | 5 - DY3                     | 5 TO 6                                       |
| 6 - DY5                            | 6 - DY4                     | 6 TO 7                                       |
| 7 - DY6                            | 7 - DY5                     | 7 TO 8                                       |
| 8 - IC                             | 8 - DY6                     | 8 N/C  |
| 9 - IC                             | 9 - DY7                     | 9 N/C  |
| 10 - DY7                           | 10 - DY8                    | 10 TO 9                                      |
| 11 - DY8                           | 11 - P                      | 11 TO 10                                     |
| 12 - P (ANODE)                     | 12 - IC                     | 12 TO 11                                     |
| 13 - G (GRID)                      | 13 - IC                     | 13 TO 1                                      |
| 14 - K (PHOTOCATHODE)              | 14 - K                      | 14 TO 14                                     |



**CONFIDENTIAL** RELEASED TO AND ACCEPTED BY THE POSSESSOR ON CONDITION THAT NO RIGHTS OF REPRODUCTION OR USE ARE GIVEN EXCEPT FOR PURPOSE ELSEWHERE SPECIFIED BY ALPHA SPECTRA, INC.

|   |                           |  |                                 |                   |
|---|---------------------------|--|---------------------------------|-------------------|
| <b>DO NOT SCALE THIS PRINT</b><br>LIMITS UNLESS OTHERWISE SPECIFIED<br><br><b>.000 ± .005</b><br><br><b>.00 ± .030</b><br><br>FRACTIONAL ± 1/32<br>ANGULAR: MACH ± 1/4 °<br>FINISHES 63 MAX<br>REMOVE BURRS AND BREAK SHARP EDGES<br>DIMENSIONS ARE IN INCHES | DRAWN<br>MRW<br>7/13/2015 |  <b>ALPHA SPECTRA, INC.</b><br><b>SCINTILLATION DETECTORS</b><br><small>800-231-2545 • 970-243-4477 • 970-244-6947 FAX<br/>         7,5 Arrowhead Court • Grand Junction, Colorado 81505<br/>         www.alpha-spectra.com</small> |                                 |                   |
|   | CHECKED                   | TITLE:<br><b>SALES DRAWING</b>   |                                 |                   |
|   | QA                        | MODEL NUMBER   | SIZE                            | DRAWING NUMBER    |
|   | MFG                       | <b>POB-14-8-ADAPTER</b>  | <b>C</b>                        | <b>7001264001</b> |
| APPROVED  |                           | SCALE: 1:1   | REV<br><b>A</b><br>SHEET 1 OF 1 |                   |